



NEO is small. Very small.
But it takes no prisoners.

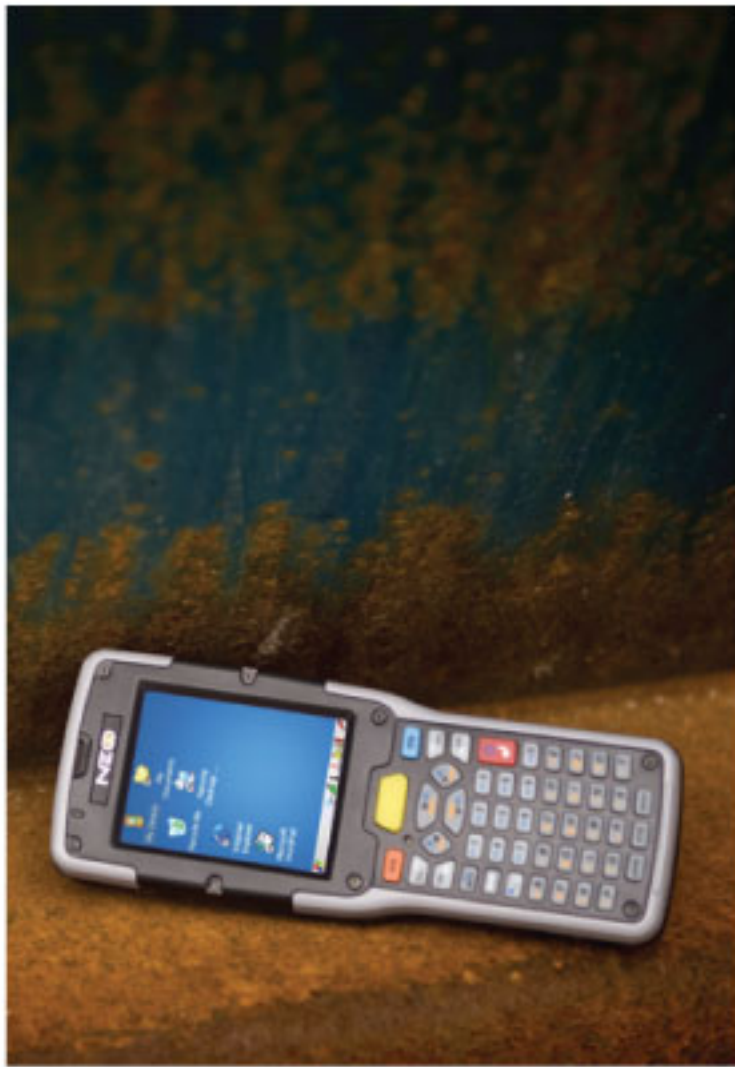
Retail.
Postal and Courier.
Warehousing and
Distribution.
Supply chain.
Arenas and sports venues.

NEO plays a key role in
them all, every day.
And they love it.

Is NEO the most compact,
intelligent, rugged handheld
computer around?
Quite possibly...

NEO

Power To Your Pocket



POCKET DYNAMO

You need smaller, lighter data collection tools. But you won't compromise on power or functionality. Now you don't have to.

NEO proves that exceptionally good things come in small packages. Its compact size (it weighs just over 275 g) coupled with a raft of features makes it perfect for the mobile workforce.

The pocket dynamo is setting industry alight. Stock checking. Inventory tracking. Light warehouse duty or full-on, in-store retail. NEO takes them all on. You want some?



FEATURES & BENEFITS

It Doesn't Mess Around

NEO may be small but don't be fooled. It's unbelievably rugged. Which means it's never out of action. And productivity never dips.

This lean machine can withstand being dropped from 1.2 meters to polished concrete. Twenty-six times over (it could take more). It packs an IP rating of 54, so you don't have to worry about dust or moisture. And it can operate in extreme conditions: from -10°C to +50°C (14°F to 122°F).

Plus, an eight-hour battery life means it lasts the whole shift.

Striking Ergonomics

We always put the worker at the heart of our design. That's why NEO just feels right. It's bright, high-resolution colour display is angled towards the user. This makes it a dream to use – unlike the frustrating 'scan, tilt and squint' action of other devices.

And just feel the weight. Or lack of it. The stylish NEO tips the scales at under 10oz.

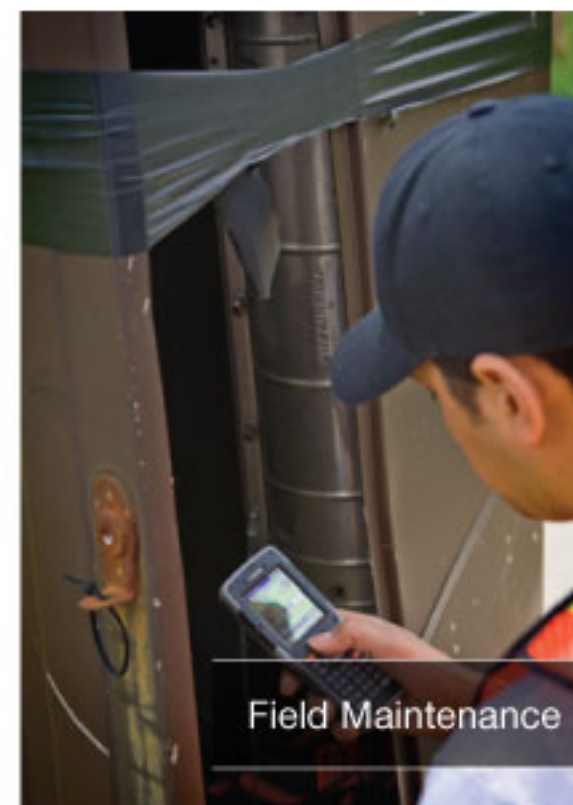
We Can't Stop Cramming

You wanted it, so we've given it to you. NEO is Windows® based and integrates with loads of advanced data capture and communications functions. WLAN and Bluetooth® connectivity – check. VoIP, IM and texting functionality, so you're never out of touch – that's here too.

And there's no need to fear the future. NEO can easily be expanded to incorporate new technologies, like RFID, as and when your apps demand it.

Choices, Choices

Different apps have different requirements. NEO supports them all – it's available with 48-key alphanumeric or 26-key numeric keyboards.



NEO

Accessories



Quad Docking Unit

Supports the simultaneous charging of four units and provides Ethernet connectivity to each device.



Base Unit Desktop Dock

Simultaneously charge the main unit and a spare battery. Includes a Micro USB Connection for data transfer.



Pistol Grip

Quick, simple pistol grip installation or removal requires no screws or tools. Clip it on for inventory checking and remove it for price checking.



Belt Kit

Quick, ergonomic device access with this quick release, quick insertion belt clip.



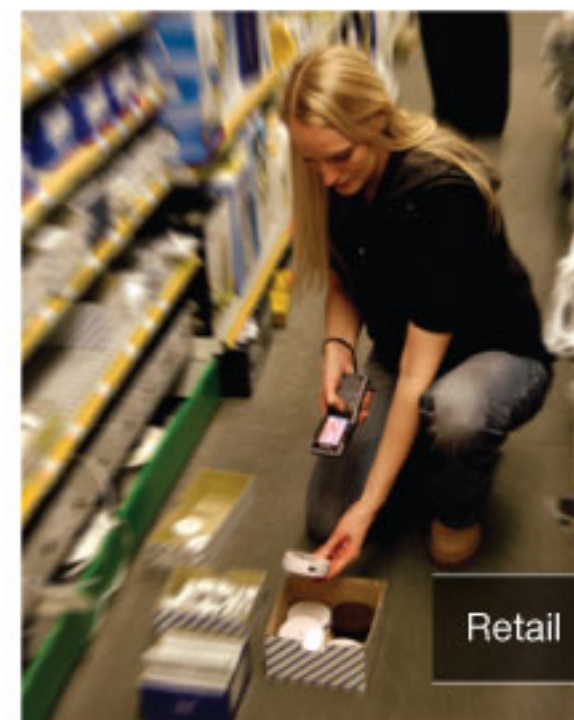
Hand Strap

Maintain a secure grip on your NEO with this ergonomic hand strap that includes a stylus holder.



Cigarette Lighter Adapter

Ensure that your NEO is fully charged, even on the road with this 12 - 24V DC cigarette lighter adapter. (For use with NEO adapter PX3054).



NEO

Specifications



MODEL VARIANTS

Batch:

- 2.7" Colour Touch Screen, Numeric Keypad, Windows® CE 5.0 Core

Plus Batch Options:

- Bluetooth® Radio
- Bluetooth® Radio and 1D Imager
- Bluetooth® Radio and 1D Laser Scanner



Connected:

- 2.7" Colour Touch Screen, Windows® CE 5.0 Professional, VoIP (Push-To-Talk), WiFi/BT Radio

Plus Connected Options:

- 1D Imager
- 1D Laser Scanner



The connected variant is available in 2 keypad configurations (26 Key Numeric or 48 Key Alpha – Numeric)

PLATFORM

- Marvell® PXA270 Processor
- On-board RAM: 128 MB SDRAM
- On-board ROM: 128 MB Flash

OPERATING SYSTEM

- Microsoft® Windows® CE 5.0

PROGRAMMING ENVIRONMENT

- HTML, XML
- Mobile Devices SDK
- HTML, XML
- Java™
- Visual Studio® 2008
- Standard protocol APIs – Windows® sockets



WIRELESS COMMUNICATIONS

- On-board IEEE 802.11b/g (CCX, V4 Certified)
- On-board Bluetooth® 2.0 + EDR radio (10 m range)

APPLICATION SOFTWARE

- Internet Explorer® 6 for CE
- Wordpad
- Active Sync
- Open TekTerm
- ANSI
- TESS terminal emulations
- IBM 3270, IBM 5250, HP 2392
- Wavelink®
- MCL
- MCC
- PTX Connect



BARCODE APPLICATIONS

- 1D Standard Laser Scanner Option
- 1D Standard Imager Option

USER INTERFACE

- Multicolour LED for scanning and charging

Display (Backlit)

- 2.7" QVGA portrait mode
- QWERTY virtual option
- Sunlight readable transmissive with touch screen
- Colour 240 x 320 graphic TFT
- Passive stylus or finger operation
- Ergonomic tilted display



Keypad (Backlit)

- 48 key Alpha Numeric
- 26 large key Numeric
- LED backlit keypad
- Ergonomically enhanced for ambidextrous one-hand operation

Audio

- Built-in microphone and receiver on all "Connected" variants
- 85 db internal beeper
- Bluetooth® (on equipped models)

INTERNAL EXPANSION SLOTS

- One MicroSD slot

EXPANSION PORT

- Battery Power
- USB signaling



DOCKING PORT

- RS232
- USB
- DC Input

POWER MANAGEMENT

- 3.7V @ 3000 mAh Li-ion rechargeable battery
- 8 hour battery operation
- Smart battery system

- Built in gas gauge & performance monitor
- System backup (10 minutes) during battery swap
- 3 day real time clock backup
- Adjustable battery allocation between system backup and runtime

PHYSICAL DIMENSIONS AND WEIGHT

- Device: 6.6" x 2.5" x 1.3" (168 mm x 64 mm x 34 mm)
- Grip Area: 2.2"/ 56 mm (W)
- Weight with battery: 0.6 lb (275 g)

REGULATORY APPROVALS

- FCC 15.247
- IC RSS210
- CE ETSI EN 300 328, ETSI EN 301 489, EN 55022, EN55024
- Safety IEC 60950-1
- Laser Safety IEC 60825-1

USER ENVIRONMENT

- Operating Temperature: 14°F to 122 °FC (-10°C to +50°C)
- Storage Temperature: -4°F to 140°F (-20°C to +60°C)
- Relative Humidity: 5% to 95% RH non-condensing
- Rain & Dust Protection: IP54, IEC 529
- Drop: 4 ft (1.2 m) – 26 drops to polished concrete
- Shock and Vibe: Random vibration 1 m²/s³ @ 5 to 200 Hz, 0.5 m²/s³ @ 200-500 with duration of 100 min/axes, 3 axes, and shock of 150 m/s² @11ms and 300 m/s² @ 6ms
- ESD: +/- 8k Vdc air discharge, +/- 4k Vdc contacts

A complete list of accessories is available at:

www.pSIONteklogix.com



Product is ROHS Compliant.

* Note this product will carry the CE Mark.
* Specifications are subject to change without notice.



Millennium Technologies
www.millennium-tech.com

11 High Street | Butler, New Jersey 07405
1-973-492-1608

For more information, please visit www.pSIONteklogix.com

© Psion Teklogix Inc., Psion Teklogix, ikón, NEO, WORKABOUT PRO and Return on Mobility are registered trademarks or trademarks of Psion PLC and subsidiaries. Other products mentioned in this document may be trademarks of Psion Teklogix Inc. or trademarks or registered trademarks of other software, hardware, or service providers and are used herein for identification purposes only. Windows and the Windows Logo are trademarks or registered trademarks of Microsoft Corporation in the United States and/or other countries. *Front image: actual size when printed at 100% scale. NA0709